



**PASSION FOR
ELECTRIC MOTORS**
Competence since 1927



TRADITION UNDER THE SIGN OF GLOBALISATION

We are a medium-sized company specializing in electric drive engineering. Since 1927 we have manufactured and delivered electric motors and transformers.

Our product and service range includes the production and customisation of motors in stock on short notice and the project-related manufacturing of motors. In this context, we see ourselves primarily as a service provider with the capacity to realise tailored product solutions within very short periods of time.

As a medium-sized family business, we are proud to set ourselves apart from the rest of the field by virtue of our high-quality engineering, our outstanding service, and our stock-keeping concept. This enables us to respond flexibly and, above all, quickly to customer needs at any time.

The corporate values we have committed ourselves to include quality, flexibility, and reliability, and we encourage a self-reliant and result-driven approach in our employees along with dedication in every sense. For more than 90 years, this has helped us win the trust of countless customers around the world.

Please find a selection of our services on the subsequent pages. For more details and interesting project references, please visit our website at www.menzel-motors.com. If you have any questions, do not hesitate to get in touch with us: We look forward to hearing from you!

„Menzel Elektromotoren means more!
Take advantage of our
custom drive solutions!“



 **MENZEL**
ELEKTROMOTOREN

OVER 90 YEARS OF EXPERIENCE - OVER 90 YEARS OF EXPERIENCE - OVER 90 YEARS OF EXPERIENCE -
SINCE
1927
MENZEL

FORWARD-LOOKING TRADITION

1927	At the age of 23, Kurt Menzel forms the company "Kurt Menzel" in Berlin
1958	Acquisition of a 10,000 sqm lot in Berlin-Tiergarten and relocation of the company
1959 – 1962	Construction and expansion of warehouses and shops
1975	Having completed his studies as a certified engineer, Kurt Menzel Junior takes over the sales department
1984	After the passing of Kurt Menzel Senior, the business is converted into MENZEL Elektromotoren GmbH
1993	In response to the rapid expansion of the business, an external stock depot of 2,000 sqm is rented in Lauchhammer (Brandenburg)
1995	Acquisition of a 6,000 sqm lot in Freienhufen (Brandenburg) and relocation of the external depot to this lot
2001	Another external depot of 7,000 sqm was acquired in Brieske (Brandenburg) to increase the warehouse capacity
2005	Mathis Menzel, certified engineer, enters the company, having completed his studies in electric engineering and gathered first professional experience in England, France, and Spain. He takes charge of international sales
2007 – 2008	At the Berlin location, capacities are massively expanded to meet the rising demand. Among other things, a new assembly line and two new crane systems are set up. Sales activities in the high voltage technology segment are pooled at the Hanover branch office
2012	The Berlin site is modernized further and expanded with the addition of a state-of-the-art paint shop.
2012	A second state-of-the-art test area is put into operation at the Berlin site. With an output of 2,300 kVA, 400-13,800V, and inverters up to 120 Hz, it is also available to external clients for motor testing.
2015	Expansion of test area capacities at the Berlin site by erecting a second 9x3m clamping field in the MENZEL test area.
2017	MENZEL celebrates its 90th anniversary



TAILORED DRIVE SOLUTIONS WORLDWIDE

Our business mainstay is to provide the fastest possible delivery of large electric machinery – including custom versions. A vast inventory of more than 20,000 motors of all types, stored in warehouses inside and outside Berlin, flexible stock withdrawals even outside the regular business hours, short production times, and state-of-the-art processing facilities and test bays in-house enable us to achieve exceptional response times. And all of this in superior quality at affordable prices.

Together with cooperation partners worldwide, we are superbly positioned, maintaining branch offices in Germany, the United Kingdom, Spain, France, Italy, and Sweden. We will adjust our drive solutions to the specific requests and particulars of individual customers and markets – covering the entire pro-

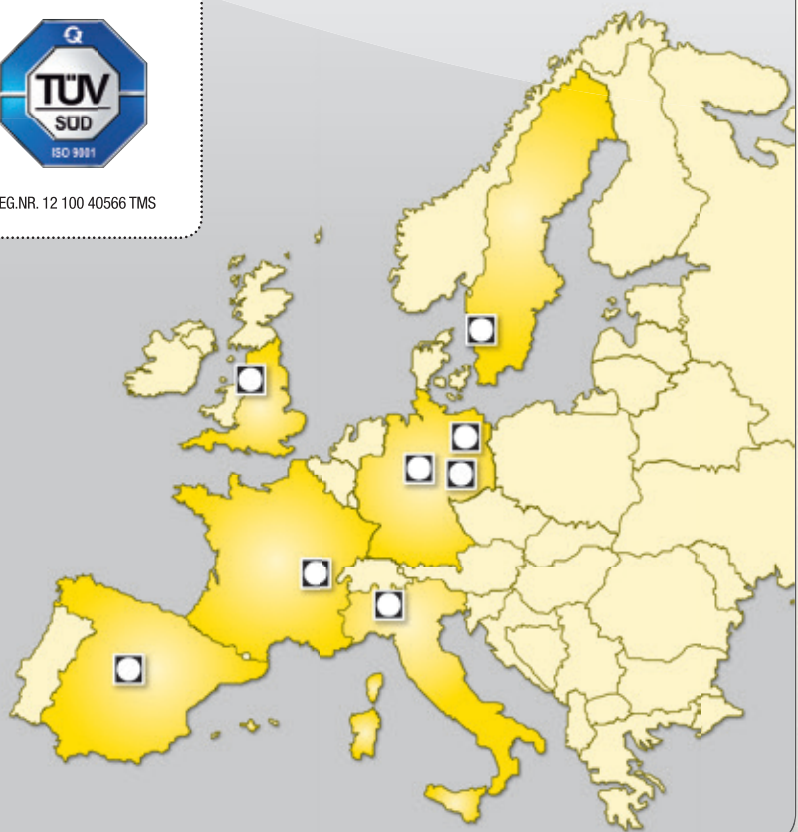
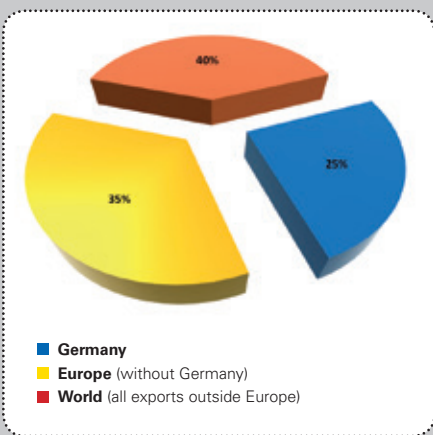
cess from the project analysis all the way to the start-up on location. As a family business with activities worldwide, we take pride in being able to advise our customers in a variety of languages. The high export share of our business reflects the international acclaim our services enjoy among customers all over the world.

DIRECTLY AVAILABLE FROM ONE OF 3 PROPRIETARY WAREHOUSES WITH A COMBINED FLOOR SPACE OF OVER 22,000 SQM

- Squirrel cage motors of up to 15,000 KW
- Slip ring motors of up to 6,000 KW
- Flange mounted motors of up to 5,000 KW
- DC motors of up to 2,000 KW



Sales by Region



PRODUCT SPECTRUM

We provide motors of standard design and common frame sizes plus trans-standard motors. Our portfolio is complemented by custom motors built to customer specifications. The idea underlying all of our services is always to find the best drive solution and thus to achieve a maximum in customer satisfaction.

It goes without saying that our products meet international standards and regulations for state-of-the-art technology. This enables us to guarantee global deployability and a long service life.



Test field 2

State-of-the-art electronic and mechanical measuring technology for:

- Electric motors and generators
- Transformer/inverter/motor systems
- Gear units
- Frequency transformers

Features

- Test voltage: up to 13.800 V
- Frequency: up to 120 Hz
- Power: up to 2.300 kVA
- Crane capacity: 16t + 10t
- Test bed size: 9x3m



High voltage squirrel cage motors

Voltage ratings:

3 up 13,8 kV
IM B3 for horizontal installation
IM V1 for vertical installation

Standard types of cooling systems:

IC 611, IC 81 W, IC 01

Standard degrees of protection:

IP 55, IP 23

Standard applications:

- Fans
- Pumps
- Blowers



High voltage slip ring motors

Voltage ratings:

3 up 13,8 kV
IM B3 for horizontal installation
IM V1 for vertical installation

Standard types of cooling systems:

IC 411, IC 611, IC 81 W, IC 01

Standard degrees of protection:

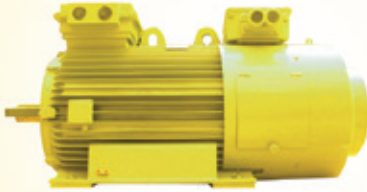
IP 55, IP 23

Standard applications:

- Mills of all kinds
- Fans
- Shredders and crushers

Subject to technical modification and error.

Low voltage slip ring motors



Voltage ratings:
230 / 400 / 500 / 690 V

Frequency:
50 and 60 Hz

Standard types of cooling systems:
IC 611, IC 81 W, IC 01

Standard degrees of protection:
IP 55, IP 23

Standard applications:

- Mills of all kinds
- Fans
- Hoisting gear
- Shredders and crushers
- Blowers

Low voltage squirrel cage motors



Voltage ratings:
230 / 400 / 500 / 690 V

Frequency:
50 and 60 Hz

IM B3 for horizontal installation
IM B35 flange and feet mounting
IM B5 / B14 for vertical flange installation
V1 for vertical installation

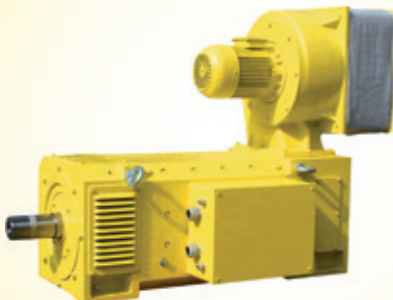
Standard types of cooling systems:
IC 411, IC 01

Standard degrees of protection:
IP 55, IP 23

Standard applications:

- Fans
- Pumps
- Blowers

DC motors



Voltage ratings:
up to 1000 V

Torque:
up to 200 kNm

Shaft height:
up to 900 mm

IM B3 for horizontal installation
IM V1 for vertical installation

Standard types of cooling systems:
IC 06, IC 17, IC 37, IC 86 W, IC 666

Standard degrees of protection:
IP 55 [IC 37 / IC 86 W / IC 666]
IP 23 [IC 06 / IC 17]

Standard applications:

- Plastics industry
- Steel industry
- Hoisting gear
- Test bays

Subject to technical modification and error.

WE SPEAK YOUR LANGUAGE

The key to our success is not just great customer relations, but primarily the relationship to our employees and the trust that has evolved over the years. It remains the mainstay of Menzel Elektromotoren even in the fast-paced times of globalisation.

Indeed, it is Menzel's corporate philosophy that our success is centred in our workforce. With an international team of highly skilled professionals and project-experienced engineers we provide fast, flexible and active support to our customers, addressing any requirement involving drive solutions.

Yet our service package goes far beyond simply delivering the right drive. We also offer a wide range of services in the areas of support, servicing, start-up, consultancy and logistics:

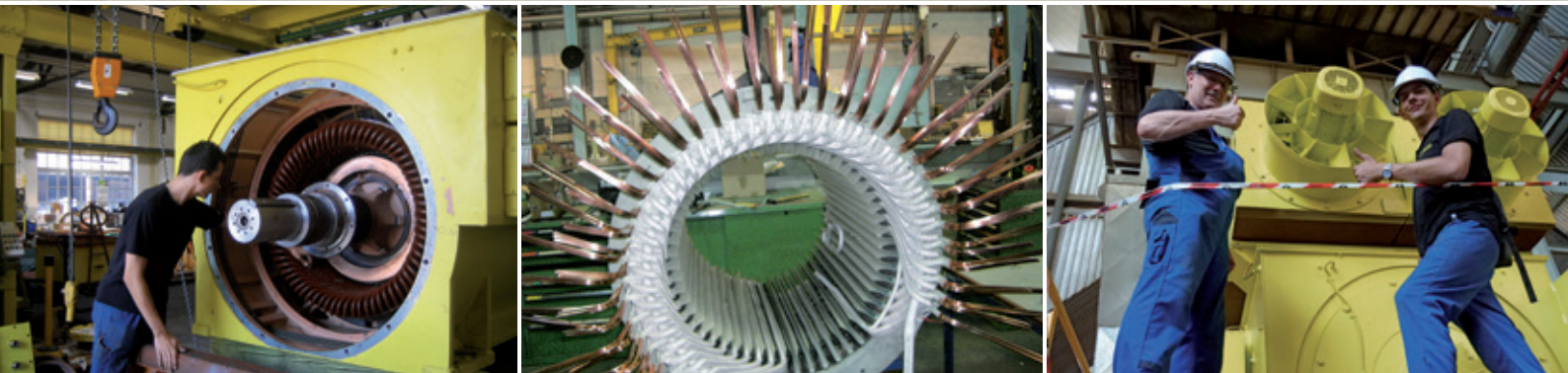
- **Complete drive design**
- **Calculation and construction of any component**
- **Start-up handled by our professional staff**
- **Global logistics solutions**
- **Specialists for on-site trouble-shooting**
- **Mobile technology for on-site analyses**
- **Checks run at our in-house test bay**
- **Re-manufacturing of existing drives**

HOTLINE: +49-1577-3499220

We are on call for our customers 24 hours a day, 365 days a year. Our logistics system permits short-term deliveries any time—including weekends!

Always available from stock:

- **Low Voltage Motors**
- **DC Motors**
- **High Voltage Motors**



LOCAL COMPETENCE – GLOBAL SUCCESS

One of the core competences of Menzel Elektromotoren is the quick replacement of motors – especially large motors – that have run for years or indeed decades, and that are practically irreplaceable.

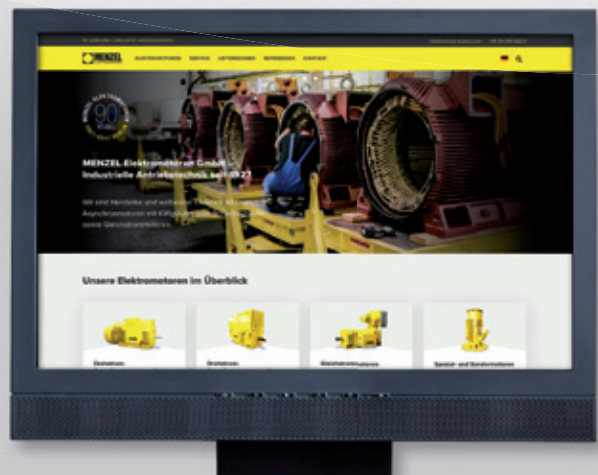
Whenever the delivery of a new motor would take many months, there is one obvious alternative: Making Menzel Elektromotoren the swift partner by your side! From our vast inventory, we will select the type of motor that best matches your specifications, customise it to your needs, and deliver it in no time at all. This corporate philosophy will help you minimise unnecessary costs and downtimes.



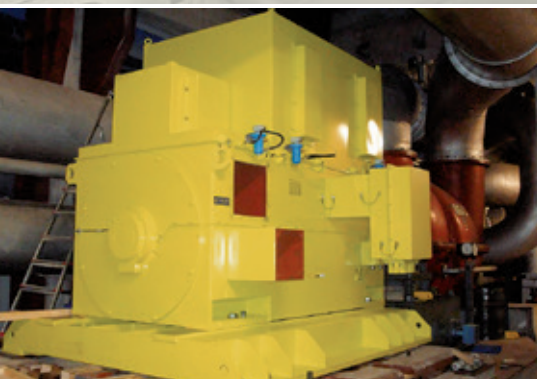
www.menzel-motors.com

Information and news in eight languages

Our international track record suggests as much. Be it a cement plant in Egypt, a paper mill in Scandinavia, or a plastics manufacturing plant in Colombia – customers the world over put their faith in Menzel quality and more than 90 years of experience in the area of electric drive technology. For a current selection of the same, please visit our news section on the Internet at www.menzel-motors.com



„Our driving force is the ambition to be one of the fastest providers and simultaneously one of the quality leaders.“



CONTACT

MENZEL Elektromotoren GmbH

Neues Ufer 19-25 | 10553 Berlin | Germany

Tel.: +49-30-349922-0

Fax: +49-30-349922-999

E-Mail: info@menzel-motors.com

Website: www.menzel-motors.com

District Court of Berlin-Charlottenburg
Commerical Register No. HRB 22534

Managing Directors:

Dipl.-Ing. Mathis Menzel

Dipl.-Kfm. Dirk Achhammer

Equity capital:

€ 2,500,000

